



Shanghai Genomics, Inc.
No. 647 Songtao Road
Shanghai 201203, China
Phone: 86-21-50802786
FAX: 86-21-50802783
www.shanghaigenomics.com

TOTAL RNA- PAIR OF HUMAN BREAST TUMOR AND NORMAL ADJACENT TISSUE

CATALOG NUMBER: SG1130-10
QUANTITY: 35 µg x 2
DESCRIPTION: Total RNA from pair of human breast tumor and normal adjacent tissue.
DONOR INFORMATION: Gender: Female Age: 69 Race: Asian Pathology Diagnosis: Breast invasive ductal carcinoma
QUALITY CONTROL: The OD 260/280 ratio for total RNA sample in Tris-HCl buffer (pH 7.5) is 2.0. RNA integrity is confirmed by the electrophoresis of 1 µg total RNA sample on a denaturing formaldehyde/agarose/EtBr gel (Fig.1).

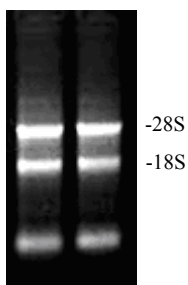


Figure 1: Total RNA from pair of human breast tumor and normal adjacent tissue. 1 µg per lane of total RNA was analyzed using a 1% denaturing formaldehyde /agarose /EtBr gel.

STORAGE BUFFER: 35 µg RNA/vial is dissolved in 70% ethanol, 0.08M sodium acetate.
PRIOR TO USE:

- 1) Centrifuge the tube at 14,000 rpm for 10 minutes in a microcentrifuge at 4°C
- 2) Remove the supernatant and resuspend the pellet in 70% ethanol.
- 3) Centrifuge the tube at 14,000 rpm for 10 minutes in a microcentrifuge at 4°C.
- 4) Remove the supernatant and resuspend the pellet in DEPC-treated H₂O to the desired concentration.

STORAGE/HANDLING: Purified RNA is recommended being stored at -70°C. Avoid repeated freeze /thaw cycles. Handle with gloves to prevent contamination with RNase.
SHELF LIFE: 1 year from date of receipt under proper storage conditions.
