



Shanghai Genomics, Inc.
No. 647 Songtao Road
Shanghai 201203, China
Phone: 86-21-50802786
FAX: 86-21-50802783
www.shanghaigenomics.com

CCNA Polyclonal Antibody

CATALOG NUMBER: SG4220-27
QUANTITY: 100µl
SOURCE: Rabbit
DESCRIPTION: Polyclonal antibodies are produced by immunizing rabbits with a GST-Cyclin A fusion protein.
SPECIFICITY/SENSITIVITY: CCNA antibody detects endogenous human CCNA (Fig.1).

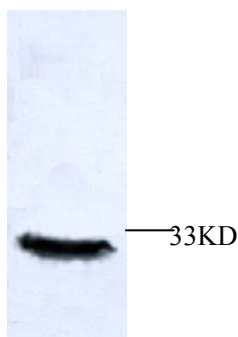


Figure 1: Western Blot analysis of HeLa cell lysate.

APPLICATION: Western Blot, Immunoprecipitation
FORMAT: Rabbit serum containing 0.02% sodium azide.
RECOMMENDED ANTIBODY DILUTION: Western blot: 1:1000.
STORAGE/HANDLING: Antibody is recommended being stored at -20°C. Avoid repeated freeze-thaw cycles.
USAGE: FOR RESEARCH USE ONLY. NOT FOR HUMAN USE.

Background:

The critical role that the family of regulatory proteins known as cyclins plays in eukaryotic cell cycle regulation is well established. The best characterized cyclin complex is the mitotic cyclin B/Cdc2 p34 kinase,

SHANGHAI GENOMICS, INC.
Bld.#1, No. 5-6, 647 Song Tao Road Shanghai 201203, China
Tel: 86-21-50802786 • Fax: 86-21-50802783
www.shanghaigenomics.com



Shanghai Genomics, Inc.

No. 647 Songtao Road
Shanghai 201203, China
Phone: 86-21-50802786
FAX: 86-21-50802783
www.shanghaigenomics.com

the active component of MPF (maturation promoting factor). Cyclin A accumulates prior to cyclin B in the cell cycle, appears to be involved in control of S phase and has been shown to associate with cyclin dependent kinase-2 (CDK2). In addition, cyclin A has been implicated in cell transformation and is found in complexes with E1A, transcription factors DP-1 and E2F and retinoblastoma protein p110.