



Shanghai Genomics, Inc.  
No. 647 Songtao Road  
Shanghai 201203, China  
Phone: 86-21-50802786  
FAX: 86-21-50802783  
www.shanghaigenomics.com

## *CCNB Polyclonal Antibody*

---

**CATALOG NUMBER:** SG4220-24  
**QUANTITY:** 100µl  
**SOURCE:** Rabbit  
**DESCRIPTION:** Polyclonal antibodies are produced by immunizing rabbits with a synthetic peptide corresponding to amino acid residue 420 to 433 (cSALVQDLAKAVAKV) of human cyclin B1 coupled with KLH.  
**SPECIFICITY/SENSITIVITY:** CCNB antibody detects endogenous human CCNB (Fig.1).

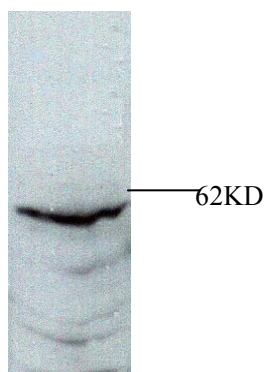


Figure 1: Western Blot analysis of NIH3T3 cell lysate.

**APPLICATION:** Western Blot, Immunoprecipitation  
**FORMAT:** Rabbit serum containing 0.02% sodium azide.  
**RECOMMENDED ANTIBODY DILUTION:** Western blot: 1:1000.  
**STORAGE/HANDLING:** Antibody is recommended being stored at -20°C. Avoid repeated freeze-thaw cycles.  
**USAGE:** FOR RESEARCH USE ONLY. NOT FOR HUMAN USE.

### **Background:**

During each cell cycle cyclins undergo periodic accumulation and destruction. As key regulators of the cell cycle the cyclins control important transitions by activating Cdks. Cyclin A regulates at least two cdks, Cdc2 p34 and Cdk2, and is believed to be necessary for progression through S phase and is active during the G2-M

---

SHANGHAI GENOMICS, INC.  
Bld.#1, No. 5-6, 647 Song Tao Road Shanghai 201203, China  
Tel: 86-21-50802786 • Fax: 86-21-50802783  
[www.shanghaigenomics.com](http://www.shanghaigenomics.com)



**Shanghai Genomics, Inc.**

No. 647 Songtao Road  
Shanghai 201203, China  
Phone: 86-21-50802786  
FAX: 86-21-50802783  
[www.shanghaigenomics.com](http://www.shanghaigenomics.com)

transition. Cyclin B1 also associates with Cdc2 p34 and this complex is requisite for the G2-M progression. The Cyclin B1/Cdc2 p34 complex is known as MPF, M-phase kinase, maturation-promoting factor, or M-phase specific histone kinase, is widely accepted as the trigger of mitosis in all organisms.