



Shanghai Genomics, Inc.
No. 647 Songtao Road
Shanghai 201203, China
Phone: 86-21-50802786
FAX: 86-21-50802783
www.shanghaigenomics.com

CCNE2 Polyclonal Antibody

CATALOG NUMBER: SG4220-15
QUANTITY: 100µl
SOURCE: Rabbit
DESCRIPTION: Polyclonal antibodies are produced by immunizing rabbits with a peptide corresponding to amino acid residue 391-404 (CMTPPKSTEKPPGKH) coupled with KLH.
SPECIFICITY/SENSITIVITY: CCNE2 antibody detects overexpressed human CCNE2 (Fig.1).

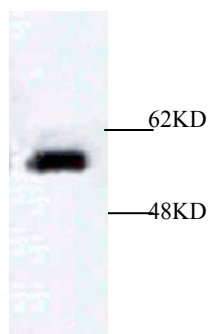


Figure 1: Western Blot analysis of cell lysate expressing CCNE2.

APPLICATION: Western Blot, Immunoprecipitation
FORMAT: Rabbit serum containing 0.02% sodium azide.
RECOMMENDED ANTIBODY DILUTION: Western blot: 1:1000.
STORAGE/HANDLING: Antibody is recommended being stored at -20°C. Avoid repeated freeze-thaw cycles.
USAGE: FOR RESEARCH USE ONLY. NOT FOR HUMAN USE.

Background:

CCNE, along with the three CCND proteins and CCNC, has been shown to represent a putative G1 cyclin on



Shanghai Genomics, Inc.

No. 647 Songtao Road
Shanghai 201203, China
Phone: 86-21-50802786
FAX: 86-21-50802783
www.shanghaigenomics.com

the basis of its cyclic pattern of mRNA expression, with maximal levels being detected near the G1/S boundary. CCNE has been found to be associated with the transcription factor E2F in a temporally regulated manner. CCNE 2 is a cyclin E-related protein that specifically interacts with cdk2 and cdk3, and with p27 and p21. CCNE 2 expression peaks at the G1/S phase transition of the cell cycle, in parallel with CCNE. Whereas CCNE 1 is expressed in most proliferating normal and tumor cells, CCNE 2 levels are low or undetectable in nontransformed cells, and are elevated in tumor-derived cells.