



Shanghai Genomics, Inc.
No. 647 Songtao Road
Shanghai 201203, China
Phone: 86-21-50802786
FAX: 86-21-50802783
www.shanghaigenomics.com

Cdc34 Polyclonal Antibody

CATALOG NUMBER: SG4220-05
QUANTITY: 100µl
SOURCE: Rabbit
DESCRIPTION: Polyclonal antibodies are produced by immunizing rabbits with a peptide corresponding to amino acid residue 224-236 (cFGDDEDDSGTEES) of human CDC34 coupled to KLH.
SPECIFICITY/SENSITIVITY: Cdc34 antibody detects endogenous human Cdc34.

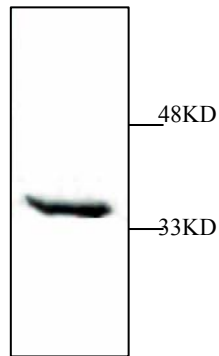


Figure 1: Western Blot analysis of HeLa cell lysate.

APPLICATION: Western Blot, Immunoprecipitation
FORMAT: Rabbit serum containing 0.02% sodium azide.
RECOMMENDED ANTIBODY DILUTION: Western blot: 1:1000.
STORAGE/HANDLING: Antibody is recommended being stored at -20°C. Avoid repeated freeze-thaw cycles.
USAGE: FOR RESEARCH USE ONLY. NOT FOR HUMAN USE.

Background:

Cell cycle events are regulated by the sequential activation and deactivation of cyclin dependent kinases

SHANGHAI GENOMICS, INC.
Bld.#1, No. 5-6, 647 Song Tao Road Shanghai 201203, China
Tel: 86-21-50802786 • Fax: 86-21-50802783
www.shanghaigenomics.com



Shanghai Genomics, Inc.

No. 647 Songtao Road
Shanghai 201203, China
Phone: 86-21-50802786
FAX: 86-21-50802783
www.shanghaigenomics.com

(Cdks) and by the proteolysis of cyclins. The cell division cycle (Cdc) genes are required at various points in the cell cycle. Cdc25A, Cdc25B and Cdc25C protein tyrosine phosphatases function as mitotic activators by dephosphorylating Cdc2 p34 on regulatory tyrosine residues. Cdc6 is the human homolog of *Saccharomyces cerevisiae*Cdc6, which is involved in the initiation of DNA replication. Cdc37 appears to facilitate Cdk4/cyclin D1 complex formation and has been shown to form a stable complex with Hsp90. Cdc34, Cdc27 and Cdc16 function as ubiquitinconjugating enzymes. Cdc34 is thought to be the structural and functional homolog of *Saccharomyces cerevisiae*Cdc34, which is essential for the G1 to S phase transition. Cdc16 and Cdc27 are components of the APC (anaphase-promoting complex) which ubiquitinates cyclin B, resulting in cyclin B/Cdk complex degradation.