



Shanghai Genomics, Inc.
No. 647 Songtao Road
Shanghai 201203, China
Phone: 86-21-50802786
FAX: 86-21-50802783
www.shanghaigenomics.com

CDK2 Polyclonal Antibody

CATALOG NUMBER: SG4220-20
QUANTITY: 50 μ l
SOURCE: Rabbit
DESCRIPTION: Polyclonal antibodies are produced by immunizing rabbits with a peptide corresponding to amino acid residue 287-298 (cQDVTKPVPHLRL) of human CDK2 coupled to KLH.
SPECIFICITY/SENSITIVITY: CDK2 antibody detects endogenous human CDK2.

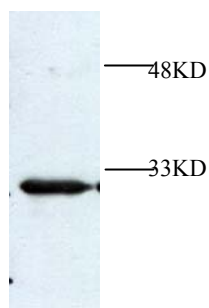


Figure 1: Western Blot analysis of 293T cell lysate.

APPLICATION: Western Blot, Immunoprecipitation
FORMAT: Rabbit serum containing 0.02% sodium azide.
RECOMMENDED ANTIBODY DILUTION: Western blot: 1:2000.
STORAGE/HANDLING: Antibody is recommended being stored at -20 $^{\circ}$ C. Avoid repeated freeze-thaw cycles.
USAGE: FOR RESEARCH USE ONLY. NOT FOR HUMAN USE.



Shanghai Genomics, Inc.
No. 647 Songtao Road
Shanghai 201203, China
Phone: 86-21-50802786
FAX: 86-21-50802783
www.shanghaigenomics.com

Background:

In vertebrates, as in yeast, multiple cyclins have been identified, including a total of eight such regulatory proteins in mammals. In contrast to the situation in yeast, the Cdc2 p34 kinase is not the only catalytic subunit identified in vertebrates that can interact with cyclins. While Cdc2 p34 is essential for the G2 to M transition in vertebrate cells, a second Cdc2-related kinase has also been implicated in cell cycle control. This protein, designated cyclindependent kinase 2 (Cdk2) p33, also binds to cyclins and its kinase activity is temporally regulated during the cell cycle. Several additional Cdc2 p34-related cyclin dependent kinases have been identified. These include Cdk3, Cdk4, Cdk5, PCTAIRE-1, PCTAIRE-2, PCTAIRE-3, Cdk6, Cdk7 and Cdk8.