



Shanghai Genomics, Inc.
No. 647 Songtao Road
Shanghai 201203, China
Phone: 86-21-50802786
FAX: 86-21-50802783
www.shanghaigenomics.com

CDK6 Polyclonal Antibody

CATALOG NUMBER:	SG4220-23
QUANTITY:	100µl
SOURCE:	Rabbit
DESCRIPTION:	Polyclonal antibodies are produced by immunizing rabbits with a peptide corresponding to amino acid residue 317-326 (cSQNTSELNTA) of human CDK6 coupled to KLH.
SPECIFICITY/SENSITIVITY:	CDK6 antibody detects endogenous human CDK6.

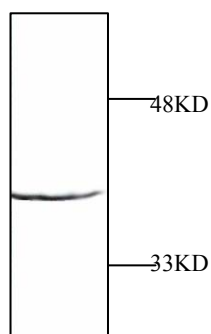


Figure 1: Western Blot analysis of NIH3T3 cell lysate.

APPLICATION:	Western Blot, Immunoprecipitation
FORMAT:	Rabbit serum containing 0.02% sodium azide.
RECOMMENDED ANTIBODY DILUTION:	Western blot: 1:1000.
STORAGE/HANDLING:	Antibody is recommended being stored at -20°C. Avoid repeated freeze-thaw cycles.
USAGE:	FOR RESEARCH USE ONLY. NOT FOR HUMAN USE.

Background:

Cell cycle progression is controlled in part by a family of cyclin proteins and cyclin dependent kinases (Cdks).

SHANGHAI GENOMICS, INC.
Bld.#1, No. 5-6, 647 Song Tao Road Shanghai 201203, China
Tel: 86-21-50802786 • Fax: 86-21-50802783
www.shanghaigenomics.com



Shanghai Genomics, Inc.

No. 647 Songtao Road
Shanghai 201203, China
Phone: 86-21-50802786
FAX: 86-21-50802783
www.shanghaigenomics.com

Cdk proteins work in concert with the cyclins to phosphorylate key substrates involved in each phase of cell cycle progression. Another family of proteins, Cdk inhibitors, also plays a role in regulating the cell cycle by binding to cyclin-Cdk complexes and modulating their activity. Several Cdk proteins have been identified, including Cdk2–Cdk8, PCTAIRE-1–3, PITALRE and PITSLRE. Cdk6 is known to associate with cyclins D1, D2 and D3 and to be involved with the G1/S transition of the cell cycle. Multiple inhibitors of Cdk6 have been identified, including p18 and p19. These inhibitors bind to both free and complexed Cdk6, and they inhibit the activity of the cyclin D-bound Cdk6.