



Shanghai Genomics, Inc.  
No. 647 Songtao Road  
Shanghai 201203, China  
Phone: 86-21-50802786  
FAX: 86-21-50802783  
www.shanghaigenomics.com

## *CUL3N Polyclonal Antibody*

---

**CATALOG NUMBER:** SG4220-17  
**QUANTITY:** 100µl  
**SOURCE:** Rabbit  
**DESCRIPTION:** Polyclonal antibodies are produced by immunizing rabbits with a peptide corresponding to amino acid residue 1-12 (cMSNLSKGTGSRK) of human Cullin 3 coupled to KLH.  
**SPECIFICITY/SENSITIVITY:** CUL3N antibody detects overexpressed human CUL3.

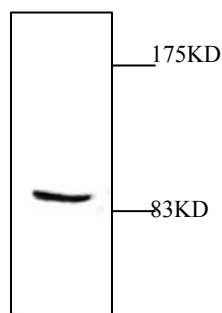


Figure 1: Western Blot analysis of cell lysate expressing CUL3.

**APPLICATION:** Western Blot  
**FORMAT:** Rabbit serum containing 0.02% sodium azide.  
**RECOMMENDED ANTIBODY DILUTION:** Western blot: 1:1000.  
**STORAGE/HANDLING:** Antibody is recommended being stored at -20°C. Avoid repeated freeze-thaw cycles.  
**USAGE:** FOR RESEARCH USE ONLY. NOT FOR HUMAN USE.



**Shanghai Genomics, Inc.**  
No. 647 Songtao Road  
Shanghai 201203, China  
Phone: 86-21-50802786  
FAX: 86-21-50802783  
[www.shanghaigenomics.com](http://www.shanghaigenomics.com)

## **Background:**

Cullin proteins comprise a distinct family of mediators that participate in the selective targeting of proteins for ubiquitin (Ub)-mediated proteolysis. CUL-1, which is the mammalian homolog of Cdc53 from yeast, is an integral component of the E3 ubiquitin ligase complex designated SCF. The SCF(Skp1/CUL-1/F-box protein complex) consists of Skp1 associating with both CUL-1 and an F-box protein, such as Skp2, which determines the substrate specificity of the complex. CUL-1 mediated ubiquitination results in the degradation of cell cycle proteins cyclin D, p21 and cyclin E. Another cullin, CUL-3 facilitates the degradation of cyclin E independent of SCF activity, while CUL-2 associates with the tumor suppressing protein VHL and elongin B to form VBC complexes, which structurally resemble the SCF ligase. Proteolysis also occurs by way of CUL-4 associating with Nedd-8, a ubiquitin-like protein, where it too functions as an active component of a multifunctional E3 complex. CUL-5, or vasopressin-activated, calcium-mobilizing protein (VACM-1), is also included in the cullin family as it shares substantial sequence homology with CUL-1.