



Shanghai Genomics, Inc.
No. 647 Songtao Road
Shanghai 201203, China
Phone: 86-21-50802786
FAX: 86-21-50802783
www.shanghaigenomics.com

CUL5N Polyclonal Antibody

CATALOG NUMBER: SG4220-14
QUANTITY: 100µl
SOURCE: Rabbit
DESCRIPTION: Polyclonal antibodies are produced by immunizing rabbits with a peptide corresponding to amino acid residue 3-17 (c-SNLLKNKGSLSQFEDK) of human Cul5 coupled to KLH.
SPECIFICITY/SENSITIVITY: CUL5N antibody detects overexpressed human CUL5.

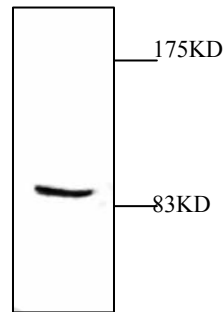


Figure 1: Western Blot analysis of cell lysate expressing CUL5.

APPLICATION: Western Blot, Immunoprecipitation
FORMAT: Rabbit serum containing 0.02% sodium azide.
RECOMMENDED ANTIBODY DILUTION: Western blot: 1:1000.
STORAGE/HANDLING: Antibody is recommended being stored at -20°C. Avoid repeated freeze-thaw cycles.
USAGE: FOR RESEARCH USE ONLY. NOT FOR HUMAN USE.



Shanghai Genomics, Inc.
No. 647 Songtao Road
Shanghai 201203, China
Phone: 86-21-50802786
FAX: 86-21-50802783
www.shanghaigenomics.com

Background:

Cullin proteins comprise a distinct family of mediators that participate in the selective targeting of proteins for ubiquitin (Ub)-mediated proteolysis. CUL-1, which is the mammalian homolog of Cdc53 from yeast, is an integral component of the E3 ubiquitin ligase complex designated SCF. The SCF(Skp1/CUL-1/F-box protein complex) consists of Skp1 associating with both CUL-1 and an F-box protein, such as Skp2, which determines the substrate specificity of the complex. CUL-1 mediated ubiquitination results in the degradation of cell cycle proteins cyclin D, p21 and cyclin E. Another cullin, CUL-3 facilitates the degradation of cyclin E independent of SCF activity, while CUL-2 associates with the tumor suppressing protein VHL and elongin B to form VBC complexes, which structurally resemble the SCF ligase. Proteolysis also occurs by way of CUL-4 associating with Nedd-8, a ubiquitin-like protein, where it too functions as an active component of a multifunctional E3 complex. CUL-5, or vasopressin-activated, calcium-mobilizing protein (VACM-1), is also included in the cullin family as it shares substantial sequence homology with CUL-1.