



Shanghai Genomics, Inc.
No. 647 Songtao Road
Shanghai 201203, China
Phone: 86-21-50802786
FAX: 86-21-50802783
www.shanghaigenomics.com

ROC1 Polyclonal Antibody

CATALOG NUMBER: SG4220-01
QUANTITY: 100µl
SOURCE: Rabbit
DESCRIPTION: Polyclonal antibodies are produced by immunizing rabbits with a peptide corresponding to amino acid residue 97-108 (CPLDNREWEFQKYGH) of human ROC1 coupled to KLH.
SPECIFICITY/SENSITIVITY: ROC1 antibody detects overexpressed human ROC1.

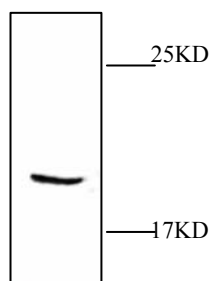


Figure 1: Western Blot analysis of cell lysate expressing ROC1.

APPLICATION: Western Blot, Immunoprecipitation
FORMAT: Rabbit serum containing 0.02% sodium azide.
RECOMMENDED ANTIBODY DILUTION: Western blot: 1:1000.
STORAGE/HANDLING: Antibody is recommended being stored at -20°C. Avoid repeated freeze-thaw cycles.
USAGE: FOR RESEARCH USE ONLY. NOT FOR HUMAN USE.



Shanghai Genomics, Inc.
No. 647 Songtao Road
Shanghai 201203, China
Phone: 86-21-50802786
FAX: 86-21-50802783
www.shanghaigenomics.com

Background:

ROC 1 and ROC 2 are the two highly conserved RING finger proteins that are homologous to APC 11, a subunit of the anaphase promoting complex (APC). ROC 1 and ROC 2 commonly interact with all cullins while APC 11 specifically interacts with APC 2, a cullin related APC subunit. ROC 1 and APC 11 immunocomplexes can catalyze isopeptide ligations to form polyubiquitin chains in an E1 and E2 dependent manner. ROC 1 is thought to play a unique role in the ubiquitination reaction by heterodimerizing with cullin 1 to catalyze ubiquitin polymerization.