



Shanghai Genomics, Inc.  
No. 647 Songtao Road  
Shanghai 201203, China  
Phone: 86-21-50802786  
FAX: 86-21-50802783  
www.shanghaigenomics.com

## *p16 Polyclonal Antibody*

---

**CATALOG NUMBER:** SG4220-02  
**QUANTITY:** 100µl  
**SOURCE:** Rabbit  
**DESCRIPTION:** Polyclonal antibodies are produced by immunizing rabbits with a peptide corresponding to GST-human p16 fusion (missing the first seven amino acids residues).  
**SPECIFICITY/SENSITIVITY:** p16 antibody detects endogenous human p16.

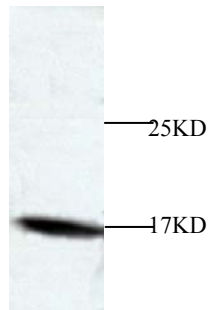


Figure 1: Western Blot analysis of 293T cell lysate.

**APPLICATION:** Western Blot, Immunoprecipitation  
**FORMAT:** Rabbit serum containing 0.02% sodium azide.  
**RECOMMENDED ANTIBODY DILUTION:** Western blot: 1:1000.  
**STORAGE/HANDLING:** Antibody is recommended being stored at -20°C. Avoid repeated freeze-thaw cycles.  
**USAGE:** FOR RESEARCH USE ONLY. NOT FOR HUMAN USE.



**Shanghai Genomics, Inc.**  
No. 647 Songtao Road  
Shanghai 201203, China  
Phone: 86-21-50802786  
FAX: 86-21-50802783  
[www.shanghaigenomics.com](http://www.shanghaigenomics.com)

## **Background:**

The progression of cells through the cell cycle is regulated by a family of protein kinases known as cyclin dependent kinases (Cdks). The sequential activation of individual members of this family and their consequent phosphorylation of critical substrates promotes orderly progression through the cell cycle. The cyclins function as differentially expressed positive regulators of Cdks. Negative regulators of the cycle include the p53-inducible, 21 kDa WAF1/Cip1 protein designated p21, Kip 1 p27 and p16. The complexes formed by Cdk4 and the D-type cyclins have been strongly implicated in the control of cell proliferation during G1 phase. It has been shown that p16 binds to Cdk4 and inhibits the catalytic activity of the Cdk4/cyclin D complex. Moreover, the gene encoding p16 exhibits a high frequency of homozygous deletions and point mutations in established human tumor cell lines.