



Shanghai Genomics, Inc.
No. 647 Songtao Road
Shanghai 201203, China
Phone: 86-21-50802786
FAX: 86-21-50802783
www.shanghaigenomics.com

p21 Polyclonal Antibody

CATALOG NUMBER: SG4220-11
QUANTITY: 100µl
SOURCE: Rabbit
DESCRIPTION: Polyclonal antibodies are produced by immunizing rabbits with a peptide corresponding to amino acid residue 146-164 (cSMTDFYHSKRRLIFSKRKP) of human p21 coupled to KLH.
SPECIFICITY/SENSITIVITY: p21 antibody detects endogenous human p21.

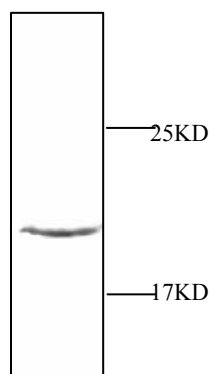


Figure 1: Western Blot analysis of NIH3T3 cell lysate.

APPLICATION: Western Blot
FORMAT: Rabbit serum containing 0.02% sodium azide.
RECOMMENDED ANTIBODY DILUTION: Western blot: 1:1000.
STORAGE/HANDLING: Antibody is recommended being stored at -20°C. Avoid repeated freeze-thaw cycles.
USAGE: FOR RESEARCH USE ONLY. NOT FOR HUMAN USE.

Background:

It is now well established that cyclins play a positive role in promoting cell cycle transitions via their ability

SHANGHAI GENOMICS, INC.
Bld.#1, No. 5-6, 647 Song Tao Road Shanghai 201203, China
Tel: 86-21-50802786 • Fax: 86-21-50802783
www.shanghaigenomics.com



Shanghai Genomics, Inc.

No. 647 Songtao Road
Shanghai 201203, China
Phone: 86-21-50802786
FAX: 86-21-50802783
www.shanghaigenomics.com

to associate with and activate their cognate cyclin-dependent kinases (Cdks) (1-3). Cdk2 associates with cyclins A, D and E and has been implicated in the control of the G1 to S phase transition in mammals. A novel 21 kDa Cdk-interacting protein, designated Cip1, has been identified in cyclin A, cyclin D1, cyclin E and Cdk2 immunoprecipitates. p21 is a potent, tight-binding inhibitor of Cdks and can inhibit the phosphorylation of Rb by cyclin A-Cdk2, cyclin E-Cdk2, cyclin D1-Cdk4 and cyclin D2-Cdk4 complexes. Expression of p21 (also designated WAF1/Cip1) is inducible by wild type, but not mutant, p53. The mouse homolog of p21 has been identified as a 20 kDa protein designated CAP20.