



Shanghai Genomics, Inc.
No. 647 Songtao Road
Shanghai 201203, China
Phone: 86-21-50802786
FAX: 86-21-50802783
www.shanghaigenomics.com

p27 Polyclonal Antibody

CATALOG NUMBER:	SG4220-30
QUANTITY:	100 μ l
SOURCE:	Polyclonal antibodies are produced by immunizing rabbits with a purified human p27 whole protein.
SPECIFICITY/SENSITIVITY:	p27 Antibody detects overexpressed human p27 (Fig.1). The antibody cross-reacts with mouse p27.

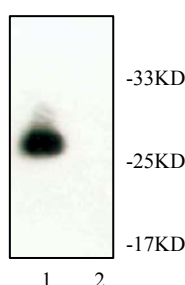


Figure 1: Western Blot analysis of samples from 293T cells overexpressing p27 (lane 1) and 293T cells (lane 2).

APPLICATION:	Western Blot, Immunoprecipitation
STORAGE BUFFER:	Rabbit serum containing 0.02% sodium azide.
RECOMMENDED DILUTION:	Western Blot: 1:2000
STORAGE/HANDLING:	Antibody is recommended being stored at -20°C. Avoid repeated freeze-thaw cycles.
USAGE:	FOR RESEARCH USE ONLY. NOT FOR HUMAN USE.

Background:

The cell cycle is driven forward by cyclin-dependent kinases (CDKs). The CDK inhibitors are important regulators of the CDKs. The cyclin-dependent kinase (CDK) inhibitor p27^{Kip1} is a tumor suppressor protein that acts in the nucleus to enforce cell cycle checkpoints. p27^{Kip1} binds to and inhibits many cyclin/cdk complexes, including cyclin D/cdk4, cyclin E/cdk2, and cyclin A/cdk2. This inhibition can subsequently block progression through different phases of the cell cycle.