



Shanghai Genomics, Inc.
No. 647 Songtao Road
Shanghai 201203, China
Phone: 86-21-50802786
FAX: 86-21-50802783
www.shanghaigenomics.com

p27^{MC} Polyclonal Antibody

- CATALOG NUMBER:** SG4220-31
- QUANTITY:** 100 μ l
- SOURCE:** Polyclonal antibodies are produced by immunizing rabbits with a peptide corresponding to amino acid residue 184 –197 (cVEQTPKKPGLRRQT) of mouse p27 coupled to KLH.
- SPECIFICITY/SENSITIVITY:** p27^{MC} Antibody detects overexpressed mouse p27 (Fig.1). The antibody does not cross-react with human p27.

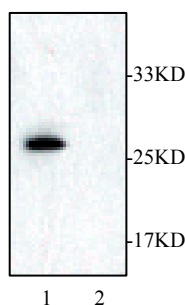


Figure 1: Western Blot analysis of samples from 293T cells overexpressing mouse p27 (lane 1) and 293T cells (lane 2).

- APPLICATION:** Western Blot, Immunoprecipitation
- STORAGE BUFFER:** Rabbit serum containing 0.02% sodium azide.
- RECOMMENDED ANTIBODY DILUTION:** Western Blot : 1:2000
- STORAGE/HANDLING:** Antibody is recommended being stored at -20°C. Avoid repeated freeze-thaw cycles.
- UASAGE:** FOR RESEARCH USE ONLY. NOT FOR HUMAN USE.

Background:

The cell cycle is driven forward by cyclin-dependent kinases (CDKs). The CDK inhibitors are important regulators of the CDKs. The cyclin-dependent kinase (CDK) inhibitor p27^{Kip1} is a tumor suppressor protein that acts in the nucleus to enforce cell cycle checkpoints. p27^{Kip1} binds to and inhibits many cyclin/cdk complexes, including cyclin D/cdk4, cyclin E/cdk2, and cyclin A/cdk2. This inhibition can subsequently block progression through different phases of the cell cycle.