



Shanghai Genomics, Inc.
No. 647 Songtao Road
Shanghai 201203, China
Phone: 86-21-50802786
FAX: 86-21-50802783
www.shanghai genomics.com

Flag monoclonal Antibody

CATALOG NUMBER:	SG4110-16
QUANTITY:	200µg
ISOTYPE:	Mouse IgG2b
DESCRIPTION:	Monoclonal antibodies are produced by immunizing mouse with synthetic peptide (DYKDDDDK), coupled to KLH.
APPLICATION	Western Blot, Immunoprecipitation
FORMAT:	1 × PBS with 50% glycerol
RECOMMENDED ANTIBODY DILUTION:	Western Blot: 0.5µg/µl

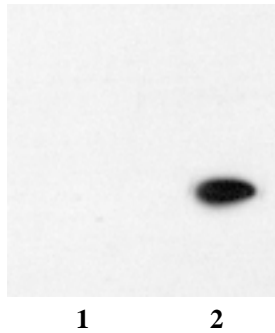


Figure 1: Western Blot analysis of cell lysate (lane 1) and cell lysate expressing flag-tagged protein (lane 2).

STORAGE/HANDLING: Antibody is recommended being stored at -20 . Avoid repeated freeze-thaw cycles.

Background:

Epitope tags consisting of short sequences recognized by well-characterized monoclonal antibody have been widely used in study of protein expression in various systems. Our anti-Flag monoclonal antibody provides a simple solution to detect the expression of protein with a Flag tag.