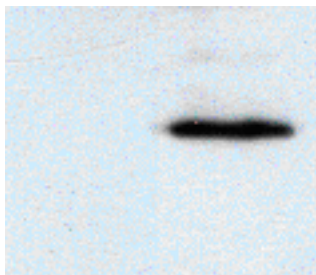




Shanghai Genomics, Inc.  
No. 647 Songtao Road  
Shanghai 201203, China  
Phone: 86-21-50802786  
FAX: 86-21-50802783  
www.shanghaigenomics.com

## *His Polyclonal Antibody*

<b>CATALOG NUMBER:</b>	SG4210-40
<b>QUANTITY:</b>	200µg
<b>SOURCE:</b>	Rabbit
<b>DESCRIPTION:</b>	Polyclonal antibodies are produced by immunizing rabbits with synthetic peptide (H H H H H H) coupled to KLH.
<b>APPLICATION</b>	Western Blotting, Immunoprecipitation
<b>FORMAT:</b>	1 × PBS with 50% glycerol
<b>RECOMMENDED ANTIBODY DILUTION:</b>	Western Blotting: 2µg/ml



**1**            **2**

**Figure 1: Western Blot analysis of cell lysate (lane 1) and cell lysate expressing His-tagged protein (lane 2).**

<b>STORAGE/HANDLING:</b>	Antibody is recommended being stored at -20°C. Avoid repeated freeze-thaw cycles.
<b>USAGE:</b>	FOR RESEARCH USE ONLY. NOT FOR HUMAN USE.

## **Background:**

Epitope tags consisting of short sequences recognized by well-characterized polyclonal antibody have been widely used in study of protein expression in various systems. Our anti-his polyclonal antibody provides a simple solution to detect the expression of protein with a his tag.